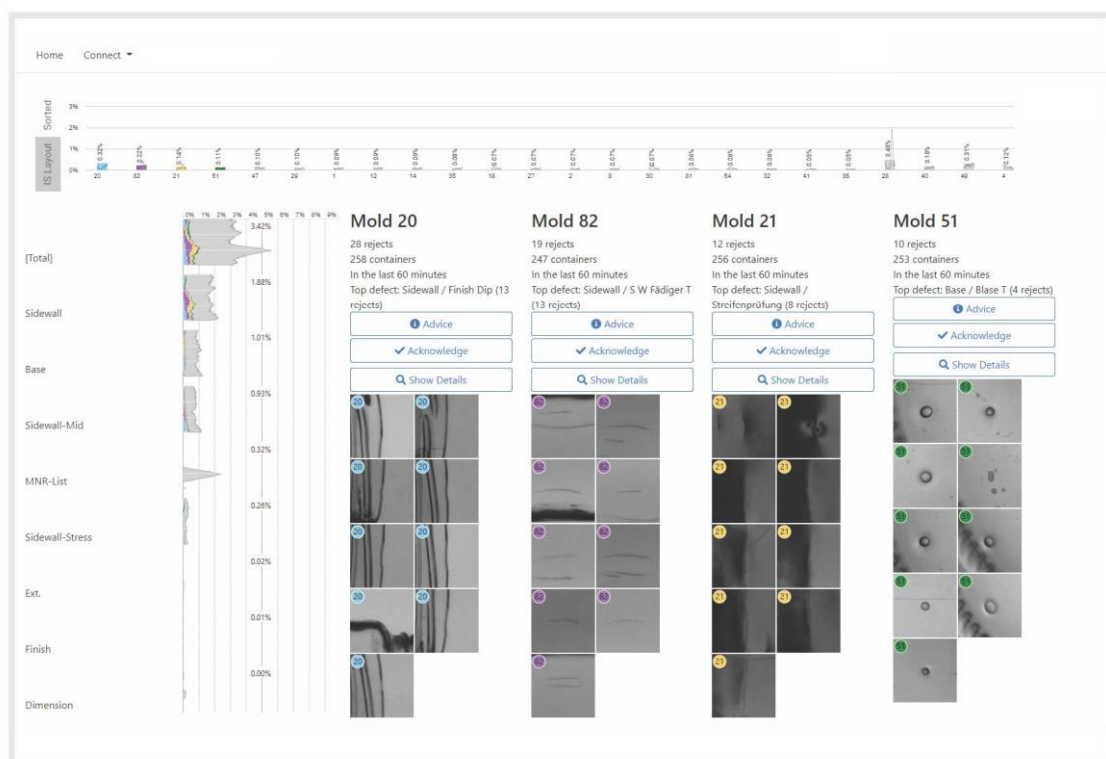


# Technical News Bulletin

Switzerland, October 2024



**Bucher Emhart Glass**  
**HEAT**

- Reject counters
- Online measurements
- Pictures and visualizations
- Automated analysis and advice



## Introduction

Making timely use of all available data is critical for optimal results. Data driven tools support in this process. HEAT is a tool to collect and visualize data to better understand and improve the process and ultimately pack to melt. HEAT is part of E2E using data more effectively in the whole plant.

## Requirements

HEAT is available for the Control Center or as software only solution on customer provided hardware (\*)

HEAT works with all Gen 3 Flexinspect inspection machines as well as Symplex machines(\*).

The latest version of Scout(\*) is also supported. (\*) an upgrade to a supported version may be necessary

(\*) If there is no Control Center the customer must provide the server (virtual machine), take care of the network setup (firewall setup) and the remote service for the installation.

### **Server requirements and recommendations (for customer supplied hardware):**

Server recommendations per furnace are min. 10 Cores; min. 32 GB RAM; min. 2 TB HDD, SSD recommended; Windows Server 2019 Standard - or Windows 10 Pro; Firewall ports to open: TCP 443, 4801, 5900 - These requirements may change depending on conditions and are indicative only.

## Sample screens

Please refer to BR0079 - HEAT.pdf for sample screens.

## Specification

|  |           |
|--|-----------|
| HEAT (SOFTWARE OPTION)<br>FOR ONE INSPECTION LEG | SY-021540 |
|--|-----------|

## Related Documentation

BR0079      HEAT